

THE GEORGE WASHINGTON UNIVERSITY LAW SCHOOL
IMPACTS THE LAW AND THE WORLD

THE GEORGE WASHINGTON UNIVERSITY
LAW SCHOOL

THE GEORGE WASHINGTON UNIVERSITY
LAW SCHOOL IMPACTS THE LAW
AND THE WORLD, BY UNIQUELY
COMBINING RENOWNED SCHOLARSHIP
AND A D.C.-INFUSED EDUCATION
TO PREPARE STUDENTS WHO SHAPE
SOLUTIONS TO THE PRESSING
CHALLENGES OF OUR TIMES.



Dayna Bowen Matthew
Dean and Harold H. Greene
Professor of Law

On April 15, 2022, the GW Law faculty overwhelmingly approved a 5-year plan to define our law school's vision and plan for the future:

The George Washington University Law School is a **global** law school that exists to make an **impact** on the law through the leadership of our diverse faculty and staff, the extraordinary influence of our extensive alumni network, and our location in the heart of downtown Washington, D.C. We strive to embrace our national and international student body within an **inclusive** community that supports their professional development and their journey into careers of meaning and influence. Our students emerge from a **D.C.-infused education** that is guided by an engaged faculty, where renowned scholarship and classroom teaching are intertwined with outstanding experiential opportunities to prepare students to shape solutions to the **pressing challenges of our times**.

Our plan includes six focus areas measured by quantitative and qualitative metrics that we will use to hold ourselves accountable to our progress each year.

I hope you will find this summary of our strategic and implementation plan will inspire you to join us, as the GW Law community works to impact the law and the world for good.

Sincerely yours,

Dayna Bowen Matthew

Dean and Harold H. Greene Professor of Law

Six Strategic Focus Areas

The GW Law faculty adopted six strategic focus areas that were developed by 150 community members through a series of design sessions, working groups, and conversations with the planning committee and key stakeholders.



STRENGTHEN ACADEMIC OFFERINGS AND PROGRAMS

The strength of our Law School is its core academic curriculum led by faculty with scholarly excellence. We will leverage this strength and build market prominence by enhancing our comprehensive legal education, and selectively prioritizing academic offerings that build on current strengths and respond to market needs.



STUDENT EXPERIENCE: STREAMLINE THE STUDENT LIFECYCLE

Create a streamlined and connected experience through students' GW Law lifecycle. We will implement process and technology improvements that support enhanced outcomes, superior customer service, and engender engaged alumni.



BUILD A CULTURE IN WHICH A DIVERSE COMMUNITY THRIVES

GW Law values and promotes diversity which we define broadly to include racial, ethnic, gender, sexual orientation, age, skill, geographic, political viewpoint, military service, socioeconomic diversity, and more. Consistent with applicable law, we will prioritize and create structures that support the expansion of a diverse community of faculty, staff, and students and enable them to thrive at GW Law. Elevate perspectives from broadly diverse community members and build equity through empowerment.



INCREASE ALUMNI OUTREACH AND ALUMNI INVOLVEMENT

Connect with graduates as lifelong learners and meaningful contributors of GW Law's community and culture. Create more meaningful touchpoints, galvanizing alumni as mentors, speakers, advisors, and donors, by offering them lifelong services as they give back to GW Law.



STUDENT EXPERIENCE: ESTABLISH HOLISTIC CAREER DEVELOPMENT ECOSYSTEM

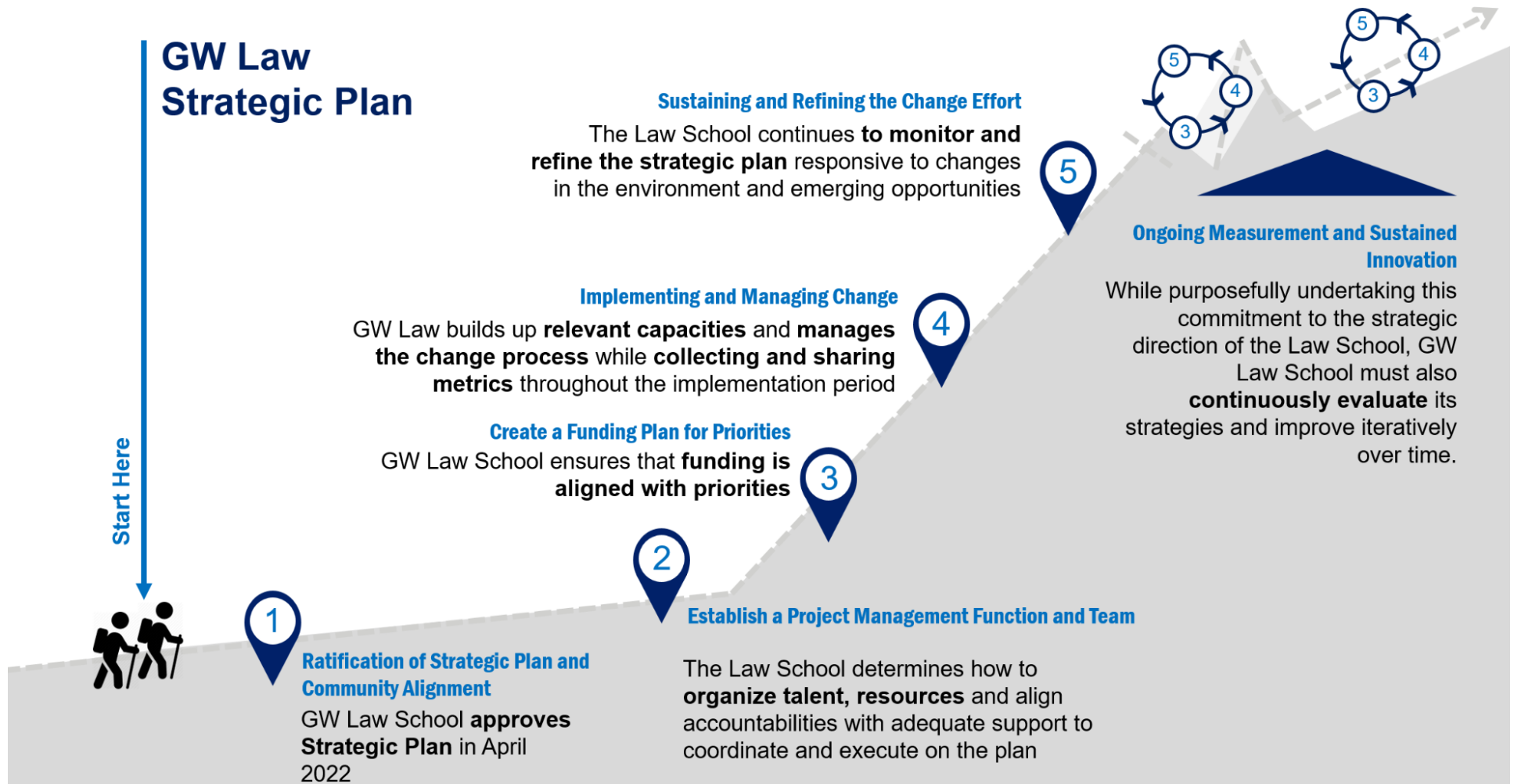
Support students' career and professional development from their first day at GW to their first day on the job. We will intentionally connect and enhance the multi-dimensional aspects of professional identity formation and successful career development during each year of study at GW Law.



EXPAND THE PUBLIC INTEREST COMMUNITY

Expand the identifiable Public Interest Community which integrates public interest and public service into the educational experience at GW Law. We will support and embrace students interested in careers in public interest through financial support, educational and scholarly opportunities, practical experiences, mentoring, networking, and community-building. We will do this by fostering greater creativity and engagement in these areas to gain prominence in the national and local public service legal community, and by attracting funding to support these relevant activities.

Strategic Plan Implementation High Level Process



GW

LAW